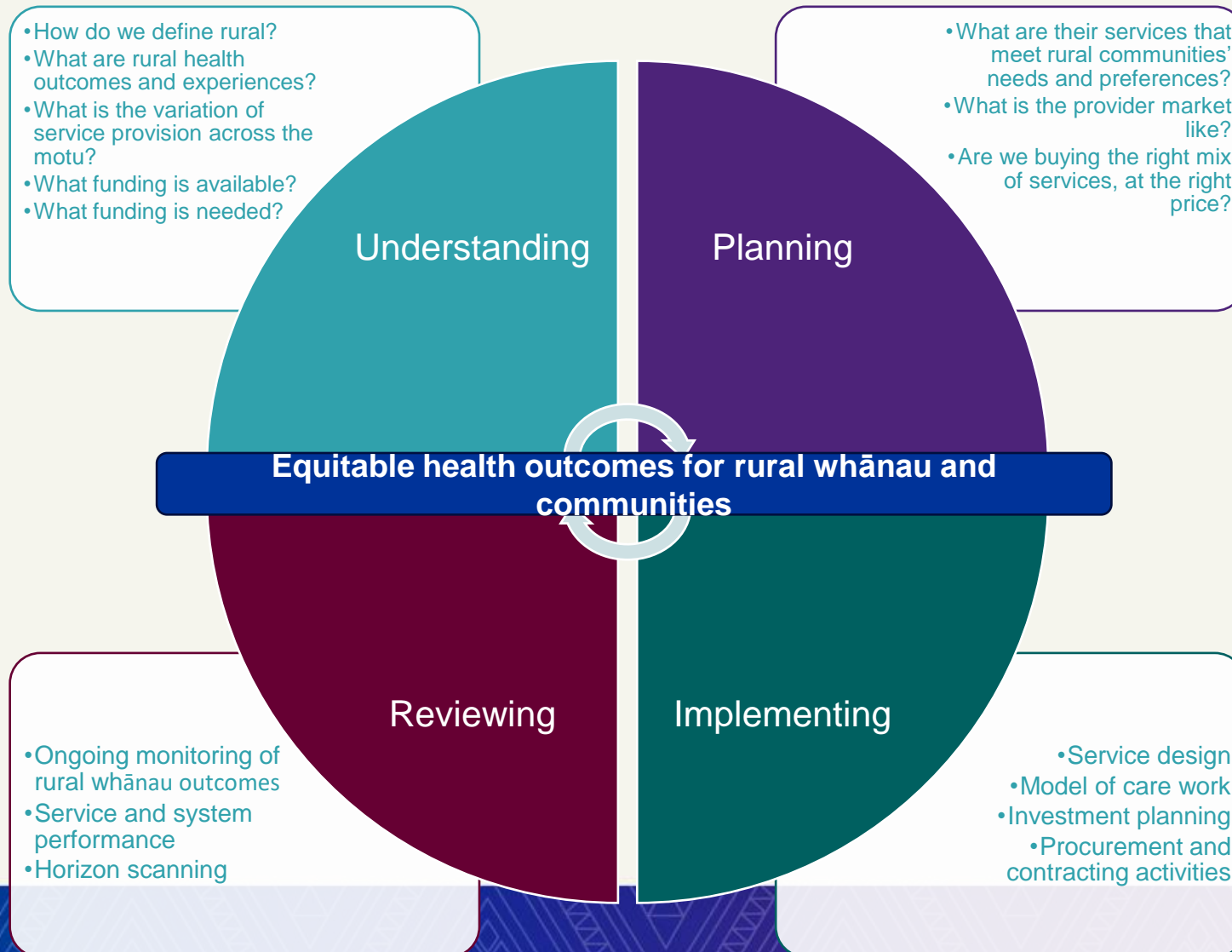


Rural Unplanned Care redesign

National Rural Health Conference 2024

Presented by Martin Hefford, Director, Living Well
and Rachel Pearce, Co-Director, Rural Health

Our role as system commissioners



Primary care development programme

Primary care

- Meso-level contracted services
- Capitation re-weighting (annual uplift, nursing, equity, FFP, fees)
- Data & digital modernisation
- Workforce planning
- Contracting and accountability frameworks

Urgent care

- Models of care / Workforce /
- Levels of service across NZ
- Telehealth
- Subsidies / costs / pricing / Copayments

Rural Health

- Urgent care inc PRIME

ACC is
interested in
all 3
programmes
of work

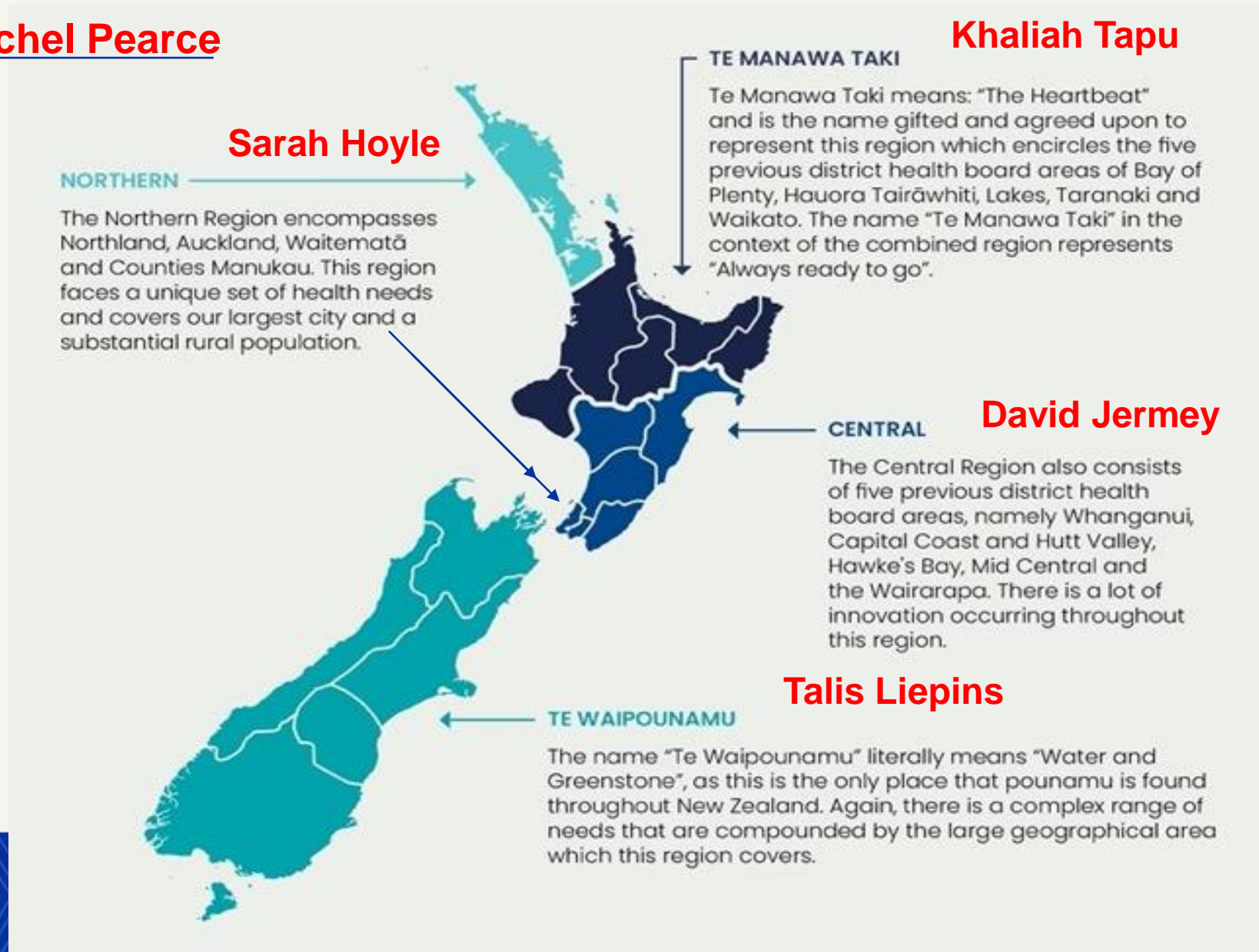
The rural health team of teams

National Rural Commissioning team

Rachel Pearce

Khaliah Tapu

- + Other National Teams:
- Hospital and Specialist Services
- People and Communications, including Workforce

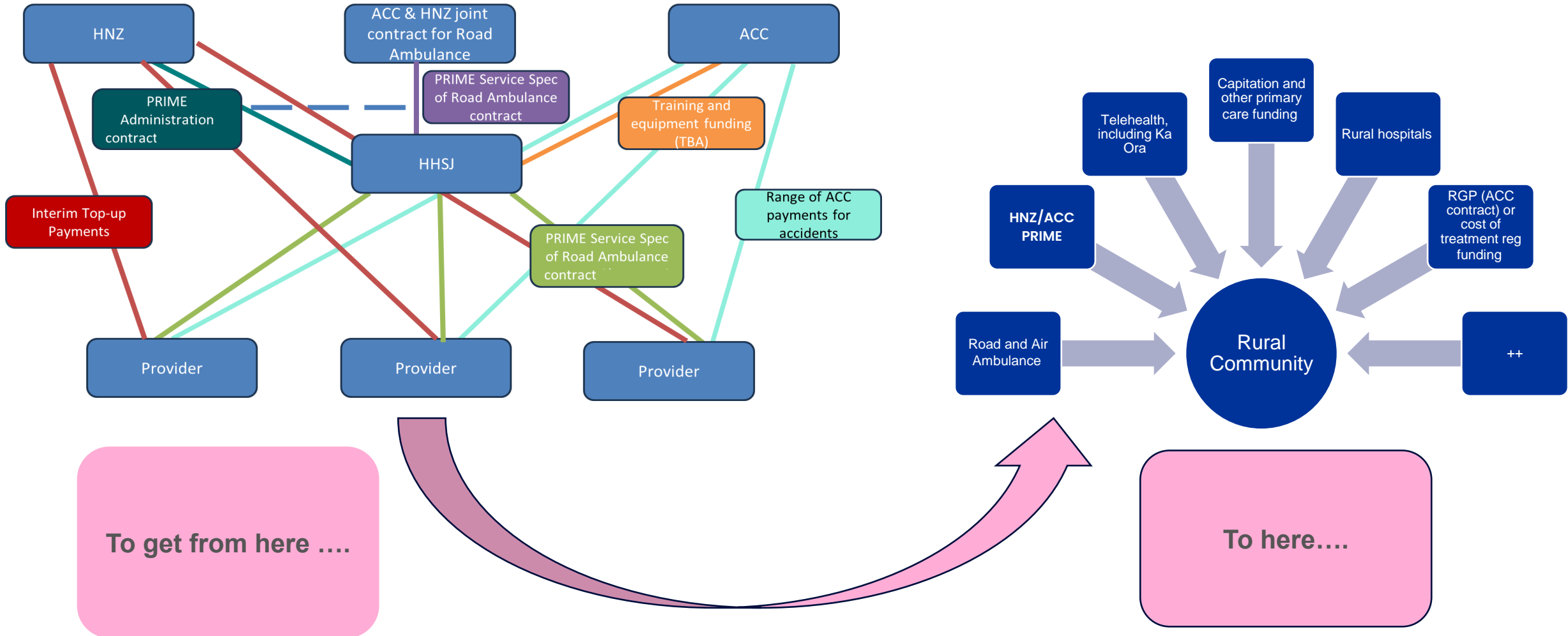




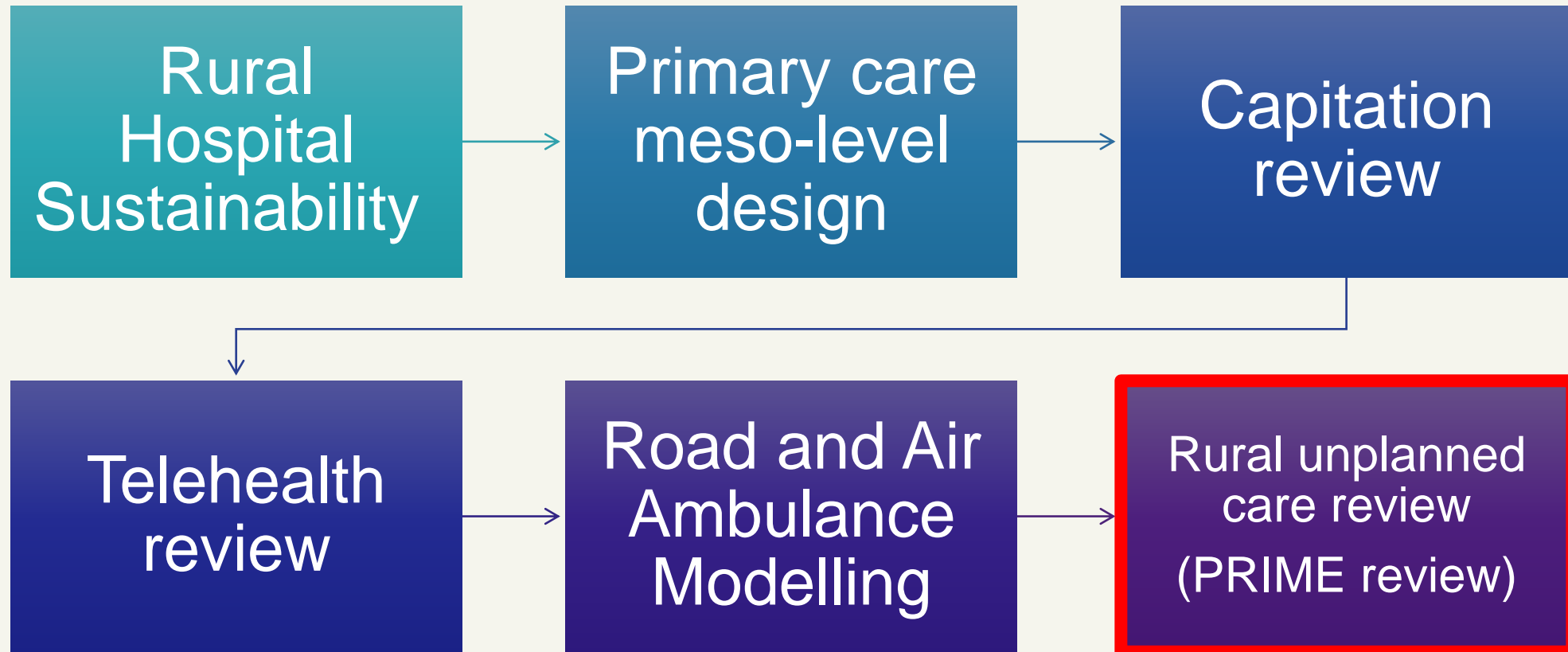
Draft national rural work programme

1. Rural funding that reflects rural contexts and need
2. Re-imagining the rural health system
3. Insights
4. Relationships, partnerships, and transparency
5. Workforce
6. Position rurality in priority projects
7. Climate change resilience and impact for rural communities
8. Build a trustworthy and credible national rural health team

We need system change for rural communities



Optimally position rural across national strategic priorities



~~PRIME Review~~



**Rural
Unplanned
Care redesign**

What are the problems we're seeking to solve?

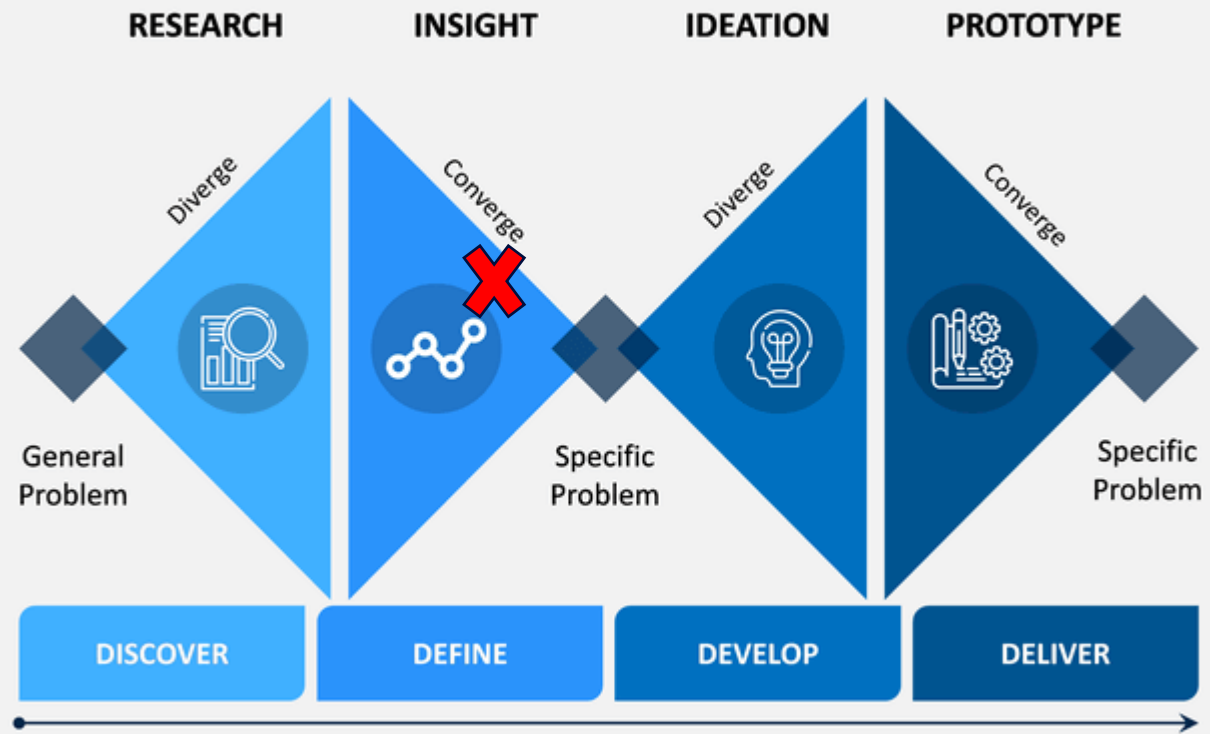
- Rural communities face inequitable access to unplanned care.
- Service viability is increasingly challenged in rural areas due to:
 - workforce shortages,
 - unsustainable funding mechanisms
 - and pressures in primary care.

Purpose (DRAFT, WIP):

- Design a rural unplanned care system that is more responsive to rural communities' needs.

DIAMOND THINKING

Double Diamond Diagram of Design Thinking



Timeframes



4 April - today

Clarify the issues we are working together to address
discuss high-level design options, contribute to **Terms of Reference**



Late April

Finalise **Terms of Reference**
Establish Design Group



May

Budget Day
24/25 Contract renewals



May – October

Redesign work, with the sector and lived experience
the context of other review work
Potential Budget 25 bid



Whakatauki

**Tūngia te ururoa kia tupu whakaritorito te tutū
o te harakeke**

*Set the overgrown bush alight, and the new flax
shoots will spring up*

*In order to change we may need to leave some
ways behind in order to do things differently*

How to contact the team:

ruralhealth@tewhatuora.govt.nz



Thank you very much